

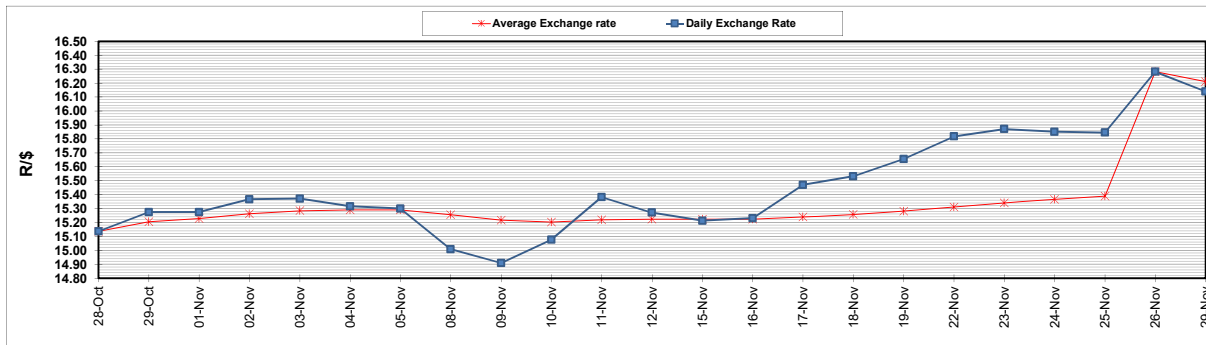
	PETROL 95 ULP	PETROL 93 ULP & LRP	DIESEL 0.05%	DIESEL 0.005%	ILL. PAR.
GAUTENG PUMP PRICE (SA c/l) AS FROM 01/12/2021	2,029.000	2,007.000	-	-	-
WHOLESALE PRICE (SA c/l) AS FROM 01/12/2021	-	-	1,792.480	1,797.880	1,167.688
SINGLE NATIONAL MAXIMUM RETAIL PRICE	-	-	-	-	1,489.000
BASIC FUEL PRICE - 29/11/2021 (SA c/l)	885.988	869.685	872.551	878.801	862.624
PRESS RELEASE CONTRIBUTION TO BFP 26/11/2021 - 29/11/2021 (SA c/l)	937.110	925.110	917.630	921.030	912.128
UNIT OVER/(UNDER) RECOVERY - 29/11/2021 (SA c/l)	51.122	55.425	45.079	42.229	49.504
AVERAGE BASIC FUEL PRICE 26/11/2021 - 29/11/2021	889.523	873.156	874.934	881.129	864.077
AVERAGE UNIT OVER/(UNDER) RECOVERY 26/11/2021 - 29/11/2021	47.588	51.954	42.696	39.902	48.051

### ANALYSIS MOVEMENT OF AVERAGE OVER/(UNDER) RECOVERY

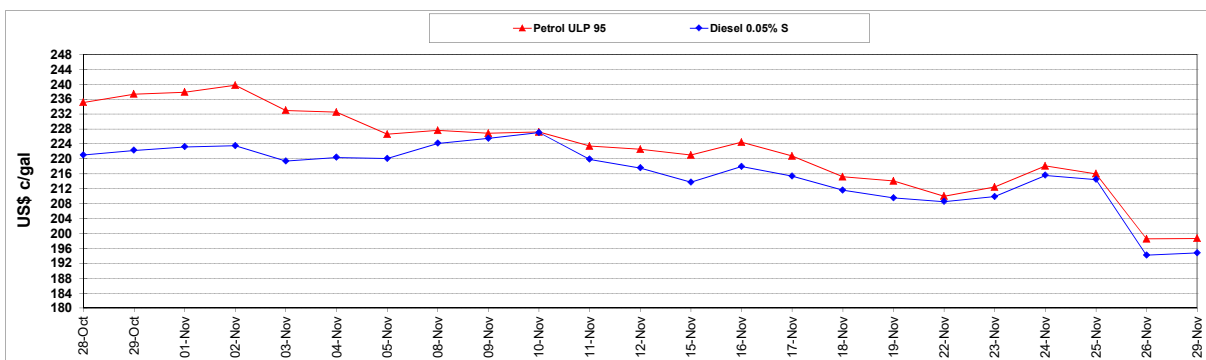
	PETROL 95	PETROL 93	DIESEL 0.05%	DIESEL 0.005%	ILL. PAR.
- MOVEMENT IN INTERNATIONAL PRODUCT PRICES	92.670	96.208	87.040	84.559	91.845
- MOVEMENT IN EXCHANGE RATE	(45.083)	(44.254)	(44.344)	(44.658)	(43.794)
AVERAGE UNIT OVER/(UNDER) RECOVERY 26/11/2021 - 29/11/2021	47.588	51.954	42.696	39.902	48.051

### R/\$ EXCHANGE RATE - (R/\$16.1400 - 29/11/2021)

#### EXCHANGE RATE USED IN BASIC FUEL PRICE



#### INTERNATIONAL PRODUCT PRICES OF BASKET USED IN BASIC FUEL PRICE



#### BASIC FUEL PRICE IN SA CENTS PER LITRE

